

Rush

ALL-INCLUSIVE ADVENTURES



Move your world

*Stylish and versatile.
A multi-talented SUV to match your lifestyle.*



Note: Vehicles pictured and specifications detailed in this catalog may vary from models and equipment available in your area.
Please inquire at your local dealer for details on the availability of features.

Fusing dynamic energy with sharp elegant styling, the Rush looks great everywhere—at the beach, in the mountains, and in the city. The only question is, where do you want to go?





*In a cabin that blends strength with elegance,
fresh horizons spring into view.*



Combination meters:

The instrument panel integrates speedometer and tachometer meters accented by elegant chrome-plated rings. Three-dimensional scales enhance visibility to provide vital driving information at a glance. The multi-information display in the center of the meters displays fuel efficiency in an intuitive format, together with an eco-bar indicator.



Smart Entry & Start System:

*When carrying the Electronic Key, all doors can be unlocked by simply pressing the switch in the door handle, and the car started by depressing the brake pedal and pushing the engine switch. Pushing the switch again stops the engine.**



Air-conditioning system:

The excellent heating and cooling performance of the auto air-conditioning keeps the interior at a comfortable temperature, for enjoyable driving comfort whether it is hot or cold outside.



Rear air-conditioner:

The rear cooler integrated in the roof further boosts comfort in the rear seats, for all occupants to ride in comfort.

**The mechanical key is built into the Electronic Key. Electronic Key caution: Radio waves may affect electric medical devices. Individuals with devices including cardiac pacemaker implants should keep them from coming close to the Smart Entry & Start System antennas. The transmission of radio waves can be disabled. Please inquire at your local dealer for details.*

Note: Vehicles pictured and specifications detailed in this catalog may vary from models and equipment available in your area. Please inquire at your local dealer for details on the availability of features.



Versatile seating:

The three rows of seats all comfortably accommodate occupants, or configure to carry a variety of loads. For example, the second-row and third-row seatbacks fold down to create a large space for carrying long items, or the third-row seatbacks tumble-fold to expand the luggage space. The driver's seat is spacious too, enhancing comfort on long drives.



Accessory sockets:

Each row of seats has an accessory socket for convenient charging of smartphones and other devices.

Storage space:

The ample luggage space has room for four 5-gallon water bottles (approx 20 liters each), even when all seats are occupied. The array of easy-to-use storage spaces includes 13 bottle holders, a glove compartment large enough for a box of tissues, and a wide tray that holds two smartphones side by side.



Built-in roof rails:

Attach a carrier on the built-in roof rails to load large cargo items that don't fit inside. The rails give the exterior an active look.

Note: Vehicles pictured and specifications detailed in this catalog may vary from models and equipment available in your area. Please inquire at your local dealer for details on the availability of features.

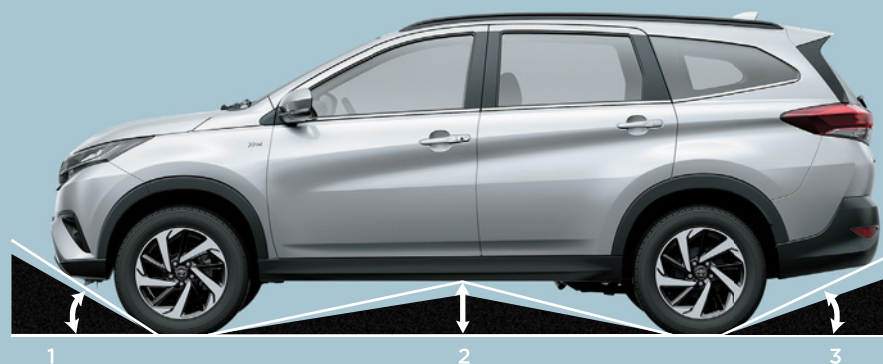




A spacious interior with room for up to seven makes getting out and about even more fun.

*The power and stability that come from a front engine,
rear wheel drive platform creates a feeling of confidence.*





All-terrain capability:

Designed to traverse rough roads, the high approach and departure angles enable the Rush to navigate a variety of terrain.

1. Approach angle: 31.0°
2. Ground clearance: 220mm
3. Departure angle: 26.5°



Maneuverability:

The 5.2-meter minimum turning radius makes for easy driving and peace of mind in narrow parking spaces and alleyways.



2NR-VE engine :

Incorporates Dual VVT-i (Variable Valve Timing-intelligent), which continuously optimizes intake and exhaust valve timing in response to driving conditions to deliver excellent performance in various conditions, together with light weight and low friction components that contribute to high combustion and outstanding fuel efficiency.

Note: Vehicles pictured and specifications detailed in this catalog may vary from models and equipment available in your area. Please inquire at your local dealer for details on the availability of features.



LED headlamps:

Ensure excellent visibility at night and in low light while helping save power.



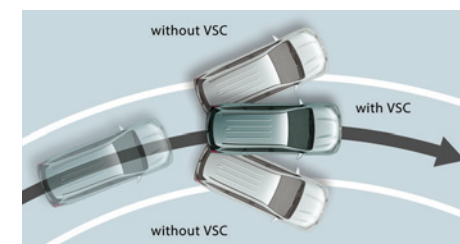
Back-up sonar:

While backing out of a car park or garage, ultrasonic sensors detect obstacles as the vehicle approaches them and alerts the driver with a buzzer and on the multi-information display.



Hill-start Assist Control:

Helps to prevent the vehicle from rolling backward, for example when starting on a steep incline.^{*1}



VSC:

When sensors detect conditions likely to cause skidding, it helps prevent front or rear wheel slip by optimally controlling engine power and braking force.^{*1}



Excellent functionality boosts peace of mind and a feeling of safety that's a step ahead.



Airbags:

Equipped with SRS driver airbag, SRS front passenger airbag, SRS side airbags (front seats) and SRS curtain shield airbags (front and rear seats).²

¹*The system may not operate properly depending on the weather, road and vehicle conditions or other factors. Be sure to read the Owner's Manual carefully. VSC: Vehicle Stability Control.*

²*The SRS (Supplemental Restraint System) airbags are supplemental devices to be used with the seatbelts. The driver and all passengers in the vehicle must wear their seatbelts properly at all times. Never install a rear-facing CRS (Child Restraint System) on the front passenger's seat. A forward-facing CRS may be installed on the front passenger's seat only when it is unavoidable. Please do not use accessories for the seats which cover the parts where the SRS side airbags should inflate. Such accessories may prevent the SRS side airbags from activating correctly, causing serious injury (Toyota genuine seat covers are specifically designed for models equipped with the SRS side airbags. To find out about availability in your area, please inquire at your local dealer). The photo shows all the SRS airbags activated for display purposes only (the SRS side and curtain shield airbags only inflate on the side of the collision in an actual accident). For details on these and other important safety features, be sure to read the Owner's Manual carefully.*

Note: Vehicles pictured and specifications details in this catalog may vary from models and equipment available in your area. Please inquire at your local dealer for details on the availability of features.

Exterior Colors



Silver Mica Metallic <1E7>



Dark Red Mica Metallic <3Q3>



Bronze Mica Metallic <4T3>



Deep Maroon Mica <R54>



White <W09>



Black Metallic <X12>

Alloy Wheel

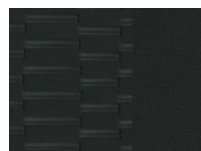


17 inch 6.5J (S grade)

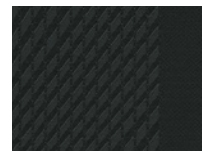


16 inch 6.5J (G grade)

Interior Colors

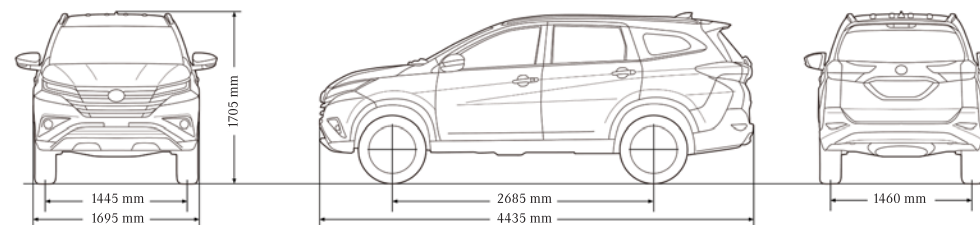


Black (Fabric. S grade)



Black (Fabric. G grade)

SPECIFICATIONS			16V 1.5-liter (2NR-VE)	
			S	G
Transmission			4-speed automatic, 5-speed manual	
DIMENSIONS & WEIGHT				
Overall length	mm	4435		
Overall width	mm	1695		
Overall height	mm	1705		
Wheelbase	mm	2685		
Tread	Front/Rear	mm	1445/1460	
Ground clearance	mm	220		
Interior length X width X height	mm	2490 X 1415 X 1195		
Curb weight	kg	1280 ¹ , 1290 ²		
Gross vehicle weight	kg	1870		
CHASSIS				
Suspension	Front/Rear	MacPherson struts (Coil springs, with a stabilizer bar)/ 5-link (Coil springs, with a stabilizer bar)		
Brakes	Front/Rear	Ventilated discs/drum		
Minimum turning radius (Tires)	m	5.2		
Fuel tank capacity	liters	45		
Tires		215/60R17	215/65R16	
ENGINES		16V 1.5-liter (2NR-VE)		
Type		4-cyl. in-line 16-Valve DOHC, chain drive with Dual VVT-i ³		
Piston displacement	cc	1496		
Max. output (EEC net)	kW/rpm	77/6000		
Max. torque (EEC net)	Nm/rpm	136/4200		
Fuel system		Port Injection		



¹ 5-speed manual transmission

² 4-speed automatic transmission

³ VVT-i: variable Valve Timing-intelligent.

- Additions of extra features may change figures in this chart.
- Vehicles pictured and specifications detailed in this catalogue may vary from models and equipment available in your area.
- Vehicle body colour might differ slightly from the printed photos in this catalogue.
- Toyota Motor Corporation reserves the right to alter any details of specifications and equipment without notice. Details of specifications and equipment are also subject to change to suit local conditions and requirements. Please inquire at your local dealer for details of any such changes that might be required for your area.

